



Faronics
DEEPFREEZE™
STANDARD

□ User Guide

ABSOLUTE System Integrity

This page intentionally left blank

Deep Freeze Security Notice

Deep Freeze does not protect against booting from a floppy drive or CD-ROM drive. The CMOS should be configured to prevent booting from the floppy drive or CD-ROM drive (i.e. set to boot to the hard drive) and the CMOS must be password protected. This is a normal precaution for most public access computers. The Windows Registry, the computer CMOS and the boot sector are protected by Deep Freeze from within Windows.

Technical Support

Every effort has been made to design this software for ease of use and to be problem free. If problems are encountered, contact Technical Support:

Email: support@faronics.com
Phone: 800-943-6422 or 604-637-3333
Hours: 7:00am to 5:00pm (Pacific Time)

Contact Information

Web: www.faronics.com
Email: sales@faronics.com
Phone: 800-943-6422 or 604-637-3333
Fax: 800-943-6488 or 604-637-8188
Hours: 7:00am to 5:00pm (Pacific Time)
Address: *Faronics Technologies USA Inc.*
Suite 170 – 2411 Old Crow Canyon Road
San Ramon, CA 94583
USA

Faronics Corporation
620 - 609 Granville St.
Vancouver, BC V7Y 1G5
Canada

Last modified: May, 2007

© 1999 – 2007 Faronics Corporation. All rights reserved. Deep Freeze, Faronics, Faronics Anti-Executable, Faronics System Profiler, FreezeX, and WINSelect are trademarks and/or registered trademarks of Faronics Corporation. All other company and product names are trademarks of their respective owners.

This page intentionally left blank

Contents

Deep Freeze Overview	7
About Deep Freeze	7
System Requirements	7
About Faronics	7
Deploying Deep Freeze	8
Attended Install or Uninstall	8
Silent Install or Uninstall	9
Silent Install or Uninstall using a Shortcut	9
Network Install on Multiple Workstations	10
Install Over Existing Deep Freeze Versions	10
Install Using Imaging	10
Using Deep Freeze	11
Deep Freeze Icons	11
Workstation Logon	11
Passwords	11
Boot Control	12
Clone	12
Permanent Software Installations, Changes, or Removals	12

This page intentionally left blank

Deep Freeze Overview

About Deep Freeze

With over five million installations, Deep Freeze has a proven track record of non-restrictive, complete Windows protection. Completely invulnerable to hacking, Deep Freeze instantly protects and preserves original computer configurations. No matter what changes a user makes to a workstation, simply restart to eradicate all changes and reset the computer to its original state. Computing environments are easier to manage and maintain, and expensive computer assets are kept running at 100% capacity. The result is a truly protected and parallel network, completely free of harmful viruses and unwanted programs.

System Requirements

Deep Freeze requires Windows 95/98/Me/2000/XP/Vista and 10% free hard drive space. The hardware requirements are the same as the recommended hardware requirements for the host operating system.

About Faronics

Faronics develops and markets intelligent utilities for absolute control of multi-user computing environments. Faronics' market-leading solutions have dramatically impacted the day-to-day lives of thousands of information technology professionals and computing lab managers, ensuring 100% availability of systems. Our user-driven, powerful technology innovations benefit educational institutions, libraries, government organizations and corporations. Incorporated in 1996, Faronics has two offices situated in the USA and Canada. An ambitious growth strategy and global outlook has Faronics striving to reach new markets. Future diversification of Faronics' utilities will provide innovative and unique solutions, continuing to enhance user productivity.

Deploying Deep Freeze

Deep Freeze can be deployed to workstations using an *Attended Install*, the *Silent Install System*, or as part of an imaging process.

All background utilities and antivirus software should be disabled and all applications should be closed prior to installation. These programs may interfere with the installation and could result in Deep Freeze not functioning correctly.

The workstation will restart after any type of installation is completed.

Deep Freeze must be in a Thawed state for any type of uninstall to succeed.

Attended Install or Uninstall

Complete the following steps to perform an attended install or uninstall of Deep Freeze Standard.

1. Insert the CD-ROM from the media package into the CD-ROM drive.
2. Select *Install/Uninstall Deep Freeze 6 Standard* in the window that appears on the desktop.

If Deep Freeze has been downloaded via the Internet, double-click the file *DF6Std.exe* to begin the installation process.

The following screen appears:



3. Choose the drives to Freeze from the list shown. Freezing all drives is recommended.
4. Click *Install* to begin the installation.

Follow the steps presented. Read and accept the license agreement. Deep Freeze is installed and the workstation restarts.

Select *Uninstall* to uninstall Deep Freeze. The option to *Uninstall* is only available if Deep Freeze has previously been installed on the workstation.

Silent Install or Uninstall

Deep Freeze can be rapidly installed to many workstations over a network using the Silent Install System. Any deployment utility that allows execution of a command line on a remote workstation can implement the Silent Install System. After the Silent Install is complete, the system restarts immediately.

The command line has the following options:

Syntax	Description
[/Install]	Install Deep Freeze using installation file
[/Uninstall]	Uninstall Deep Freeze
[/PW=password]	Sets a password during installation
[/AllowTimeChange]	Allows system clock to be changed
[/Freeze=C,D,...]	Freezes only drives listed (Thaws all others)
[/Thaw=C,D,...]	Thaws only drives listed (Freezes all others)

Example Command Line: `DF6Std.exe /Install /Freeze=C /PW=password`

In the above example, only the C: drive is Frozen. Any other drives on the workstation are Thawed. If the workstation only has a C: drive, the [/Freeze] switch can be omitted. A password (password) is created. After executing the command, Deep Freeze installs and the workstation restarts Frozen.

The Silent Install System does not work without the [/Install] or [/Uninstall] switch.

Deep Freeze must be in a Thawed state before [/Uninstall] can be used.

Silent Install or Uninstall using a Shortcut

Deep Freeze can be installed directly on a workstation without having to use the installation dialog box by using the following steps.

1. Locate the Deep Freeze installation file (*DF6Std.exe*) on the Deep Freeze Standard CD.
2. Right-click on the icon and choose *Create Shortcut*. Save the shortcut to the desktop.
3. Right-click on the shortcut and choose *Properties*.
4. Edit the path of the *Target* field by typing `/install` or `/uninstall` at the end of the path.

Example Shortcut Target: `"E:\Deep Freeze Install File\DF6Std.exe" /install`

Double-clicking the new shortcut results in the immediate installation or uninstallation of Deep Freeze, followed by a restart of the workstation.

Deep Freeze must be in a Thawed state before `/uninstall` can be used.

Network Install on Multiple Workstations

The Silent Install System can also be used to install Deep Freeze on multiple workstations over a network. If the workstations on the network use logon scripts, the scripts can be used to install Deep Freeze on all networked workstations automatically. All workstations restart Frozen and ready for use after installation has completed.

Use the following command line syntaxes to create an install error report log file:

- `\\Server Name\Share Name\DF6Std.exe /install >> dfinstall.log`

NOTE: the `dfinstall.log` file must exist prior to running this command.

Install Over Existing Deep Freeze Versions

All existing Deep Freeze versions must be uninstalled prior to performing any new Deep Freeze installation.

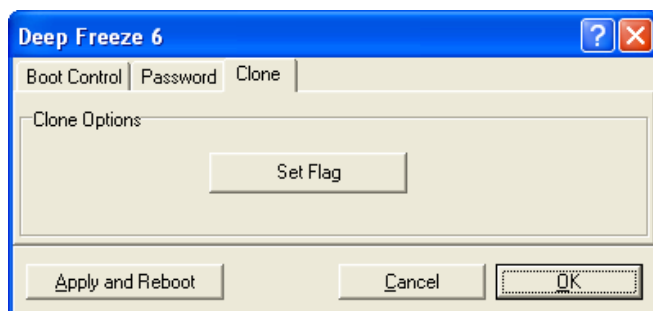
Install Using Imaging

Deep Freeze has been designed to work with all major imaging and desktop management software. Use either an Attended Install or the Silent Install System to install Deep Freeze on a master image.

Deep Freeze must be prepared for deployment before finalizing a master image. To prepare the master image for deployment, restart the workstation into a *Thawed* state and log on to Deep Freeze using the keyboard shortcut CTRL+SHIFT+ALT+F6. Select the *Clone* tab, and click *Set Flag*.

Click *OK* to save the configuration or *Cancel* to close the window.

Alternatively, to have this action occur immediately, click *Apply and Reboot*.





After imaging, the workstations require an additional restart for Deep Freeze to correctly detect the changes in disk configuration. If the workstations are imaged in an unattended mode, steps should be taken to ensure the workstations are restarted to allow the configuration to update.

To return to the *Frozen* state after imaging is complete, set Deep Freeze to *Boot Thawed on next n* number of restarts (in the master image) so that after *n* number of restarts, the workstation is automatically *Frozen*.

Using Deep Freeze

Deep Freeze Icons

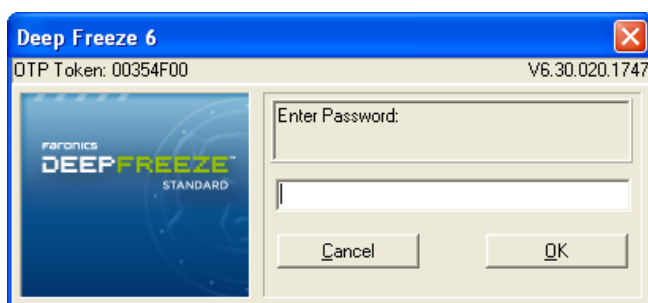
The Frozen  or Thawed  Deep Freeze icon appears in the System Tray after installation and indicates whether the workstation is currently protected by Deep Freeze (Frozen) or unprotected (Thawed).

Workstation Logon

Use one of the following ways to logon to Deep Freeze on a workstation.

- Press SHIFT and double-click the Deep Freeze icon in the System Tray
- Use the keyboard shortcut CTRL+SHIFT+ALT+F6.

Either method brings up the logon dialog.



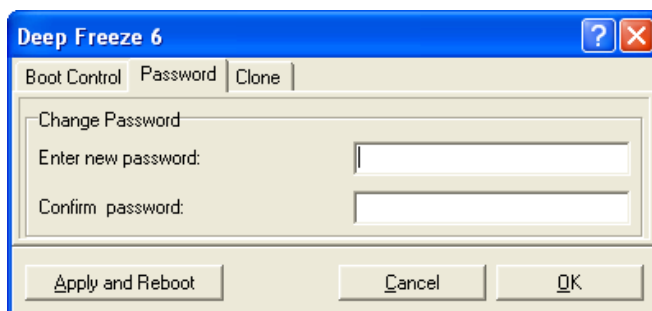
Enter the administrator password and click **OK** to logon to Deep Freeze.

If no password has been set, leave the *password* field blank and click **OK**.

As an additional security feature, Deep Freeze prevents dictionary attacks by automatically restarting the workstation after 10 unsuccessful attempts.

Passwords

The *Password* tab is used to set a new password or change the password that was used to logon to Deep Freeze.

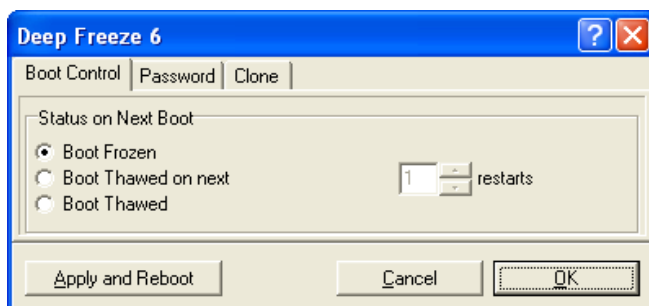


Enter a new password, confirm, and click **OK** to set the password, or *Cancel* to close the window.

Alternatively, to have this action occur immediately, click *Apply and Reboot*.

Boot Control

The *Boot Control* tab is used to set the mode Deep Freeze will be in after the next restart.



Choose one of the following options:

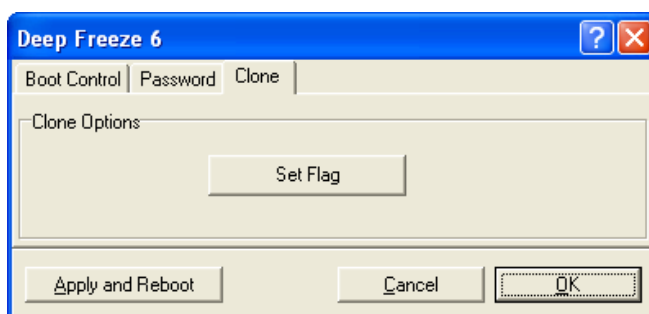
- Boot Frozen* to ensure the workstation is Frozen the next time it is restarted
- Boot Thawed on next* to ensure the workstation is Thawed each time it is restarted for the next specified number of restarts
- Boot Thawed* to ensure that the workstation is Thawed each time it is restarted

Select the radio button next to the desired choice and click *OK* for the changes to take effect or *Cancel* to close the window.

Alternatively, to have this action occur immediately, click *Apply and Reboot*.

Clone

The *Clone* tab is used to prepare master images for the deployment process. For more information refer to the *Install Using Imaging* section.



Permanent Software Installations, Changes, or Removals

Workstations must be Thawed for any permanent changes to take effect. Installation of software often requires one or more restarts to complete the installation. It is recommended that the *Boot Control* tab is used to allow the workstation to restart with Deep Freeze Thawed until installations or changes are finished.